

We are
HOPE Nation

2022 Annual Report



Providing Unexpected Amazingness to Families with cancer



Dear Hope Nation,

Thank you for making 2022 an amazing year for BHH and the Families we help! Because of your generosity, we were able to help a record number of 1,030 Families with over \$1.3 million in assistance. Because of you, our BHH Families knew they were not alone in their battle with cancer.

2022 brought a lot of reasons to celebrate. We crossed our 8,000th Family helped in 2022, finishing the year with over 8,400 Families helped since inception! Our Light of Hope Family Program was fully translated into Spanish, enabling us to help even more Families in our area. We had our most successful year with our Signature Events, thanks to supporters like you coming together to make a difference. Our Ella Bella Fashion Show was an evening filled with fun for our Families and raised over \$210,000!

BHH was able to provide \$1.3 million in Unexpected Amazingness because of the kindness of our partners in the community. Students at Haverford Middle School raised over \$109,000 through their Hope Olympics event! The ACME Markets Register Campaign raised over \$436,000 and assisted 435 families with household bills and groceries. We are so grateful to these and other community partners who helped spread the mission of BHH.

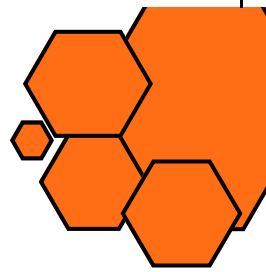
At the end of the year, Hope Nation came together to help 401 Families through our Adopt-A-Family Program! Our friends at Allied Resources Group doubled the impact of our Giving Tuesday gifts, allowing us to help more Families with bill pay during the winter! ACME's support of \$90,000 in ACME gift cards provided an additional 300 local families with cancer with grocery and meal assistance over the holiday season. Because of your generosity, BHH Families were able to stay in their homes and provide gifts for their loved ones during the holidays.

The record number of Families helped in 2022 has shown the increasing need for financial support in our area. As the cost of living continues to rise, we will continue to be a Light of Hope for Families battling cancer. Bringing Hope Home could not carry out its mission without the compassion of a caring community like the ones we have in Hope Nation. From the bottom of our hearts, thank you!

Sincerely,

Paul Isenberg
CEO & Co-Founder

Vision And Mission



Vision

Thanks to HOPE Nation and Bringing Hope Home's tireless efforts, every Family with cancer will feel more hopeful and have less stress because of the positive, loving impact we have on their lives.

Mission

Bringing Hope Home® is a non-profit organization that provides Unexpected Amazingness® to local Families with cancer through financial and emotional support. Through our Light of Hope Family Program, we offer one-time financial assistance to pay essential household bills for Families with cancer.

Board Members

Paul Isenberg

CEO & Co-Founder, Bringing Hope Home

Timothy Sherry

Co-Founder, Bringing Hope Home
Alliance Director, Jefferson Frank

Patrick Bellot

Director, Phoenix Management Services

Patrick Boyle

Partner-in-Charge, EisnerAmper

Larry Burrill

Co-President, McKean Defense (Retired)

Linda Calderin

Manager, Mermaid Properties

Meghan Creighton

Benefits Consultant, Creative Benefits, Inc.

Alicia Dellario

Senior Director, Pfizer (Retired)

Jeff Dittus

Entrepreneur

Michelle Goglia

Vice President, UnitedHealthcare

Steve Hobman

General Partner, New Spring Capital

Martha Miele

SEI Investments

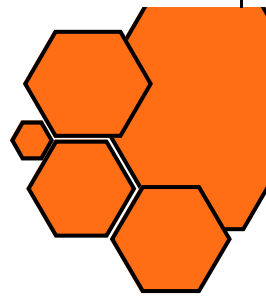
Terry Montgomery

Retired CFO, Public & Private Companies

Jessica Tracy

Director, Color Genomics

Meet The Team



PAUL ISENBERG
CO-FOUNDER AND CEO



AMY FORKIN SEYBOLD
CHIEF OPERATING OFFICER



JOHN FARLEY
CHIEF DEVELOPMENT OFFICER



SARAH ZARGIEL
DIRECTOR OF EVENTS



LINDSEY HARGETT
MARKETING & COMMUNICATIONS
MANAGER



BRIANNE REPP
SCHOOL & EXTERNAL EVENTS
MANAGER



JUDY SWAHL
FAMILY OUTREACH SUPERVISOR



AIMEE PADLEY
DONOR RELATIONS SPECIALIST



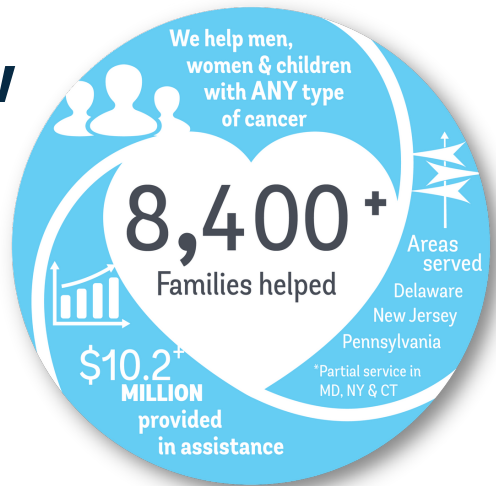
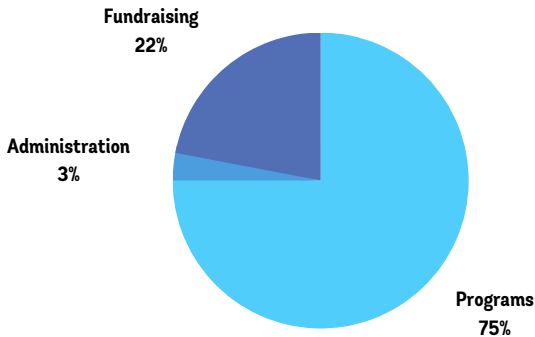
RACHAEL MURPHY
FAMILY OUTREACH
ADMINISTRATOR



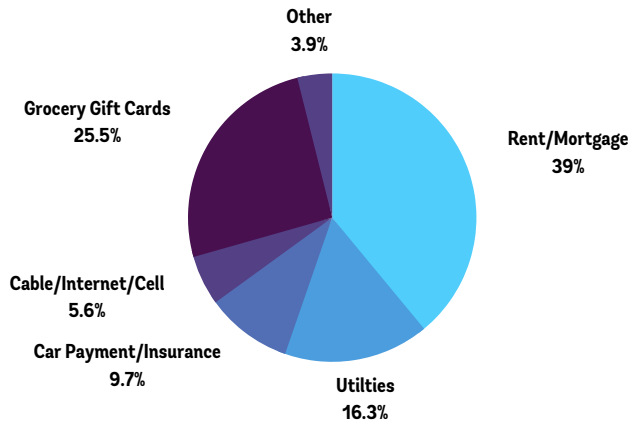
NORMA GIANNINI
FAMILY OUTREACH
ADMINISTRATOR

Financial Overview

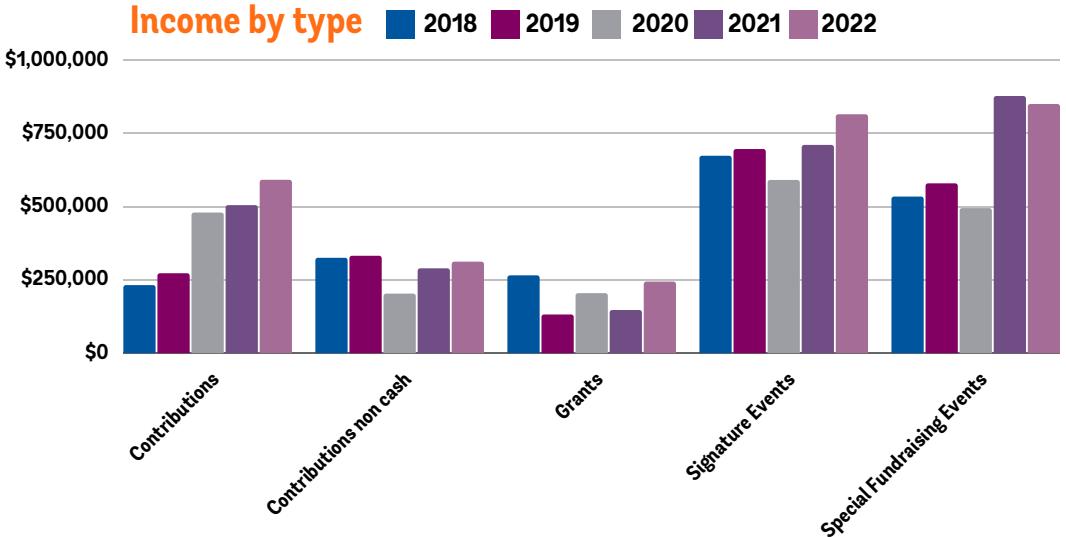
BHH Expenses



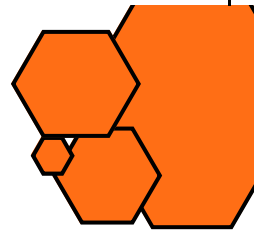
Family Expenses Paid



Income by type



Thank You Hope Nation



TO OUR 2022 CORPORATE PARTNERS (\$10,000+)

ACME Markets	Faulkner Nissan	Sprouts Farmers Market
Allied Resources Group	Independence Blue Cross	Troutman Pepper
Compass	Lehigh Valley Health Network	University of Pennsylvania
Deacon Industrial Supply Company	Phillies Charities	

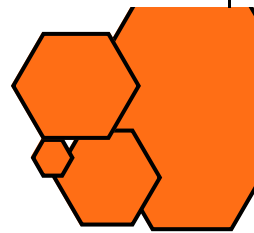
TO OUR 2022 FOUNDATIONS, EXTERNAL EVENTS & SCHOOL PARTNERS (\$10,000+)

ARG Golf Outing	Foundation for Delaware County	Suzy's Mega Networking Lunch
Bayard Rustin High School	Haverford Middle School	TD Charitable Foundation
Cardinal O'Hara High School	Jim Sipala Kia	Tee It Up For Teal
Chichester DuPont Foundation	Lantium	The 31 Foundation
Compassionate Foundation, Inc.	M&T Charitable Foundation	The Gordon Charter Foundation
Cornhole For A Cause	O'Neil Family Foundation	Tompkins-Broll Family Foundation
Crestlea Foundation	Qlarant	WAWA Foundation
Flyers Charities	Stephen and Mary Birch Foundation	

TO OUR INDIVIDUAL FAMILIES WHO GAVE OVER \$10,000

Calderin Family	Hudson Family	Risse Family
Curcillo Family	Kynett Family	Swahl Family
Franzini Family	McCullough Family	Webster Family

Words from our Families

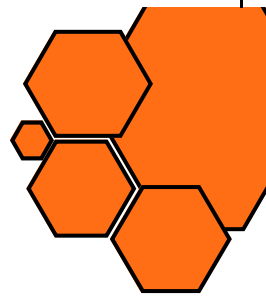


"I cannot begin to find the words to express how grateful Stephen and I are for organizations such as Light of Hope. I asked God to watch over us as we navigate our new reality and to give us the strength, courage, and patience to figure out how to handle our financial hurdles. We have applied for disability and social security. Everything is a wait and see but that doesn't help me take care of my husband now. So thank you for this gift of love and support."

-BHH Family

"Bringing Hope Home has helped tremendously with being able to keep a roof over my head during treatment. It is such a huge assistance with rent and has relieved a lot of financial stress during this time. I am tremendously grateful for the kindness and generosity that the Bringing Hope Home team has bestowed upon me and my family. It is greatly appreciated. Thank you!!"

-BHH Family



Contact Us



(484) 580-8395



johnfarley@bringinghome.org



bringinghome.org



Unexpected Amazingness
for Families with cancer